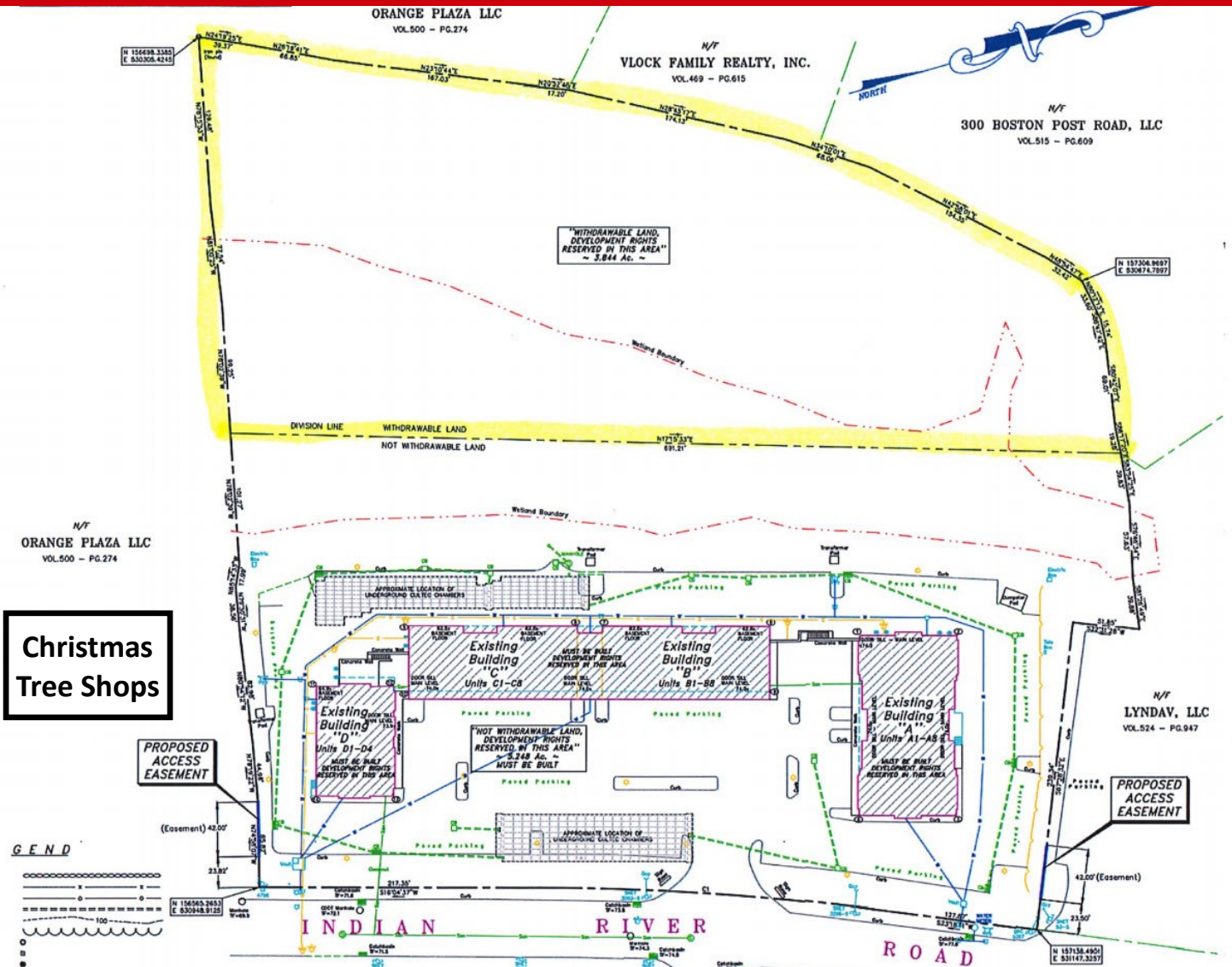


ORANGE, CONNECTICUT FOR SALE - LAND for LIGHT INDUSTRIAL USE INDIAN RIVER ROAD/BOSTON POST ROAD



OFFERED AT \$289,900

- 3.84-acre parcel
- Perfect for a small manufacturer, light assembly, or storage
- Prime location off Boston Post Road (Route 1)
- Within one mile of I-95 at Exit 41
- Potential to build a 10,000 SF structure
- Office/Medical



CARL RUSSELL
Senior Commercial Broker
CCIM, SIOR
crussell@hpearce.com
203.640.1412
203.783.9999 x102
www.hpearcecommercial.com



pearce
commercial